

The background image shows an industrial facility with a large tanker truck in the foreground. The truck is white with a large cylindrical tank. The facility has a complex network of pipes, walkways, and structural steel. The image is split vertically: the left side is tinted blue, and the right side is tinted yellow. The text is overlaid on this background.

ONTEC

STEPS AHEAD

OnatexMID and OntecMilo

MID approved liquid
loading and measurement
system for ATEX areas

BENEFITS OF OnatexMID AND OntecMilo



Pre-existing ATEX and MID certifications save you time and resources



Approved for fiscal billing purposes (fuel taxation, custody transfer)



Recipe systems for each customer products and additives



Customisation to meet the needs of each terminal customer (order protocols, consignment notes, numerisation of compartments etc.)



Real-time storage management



Preventing fraud



Higher environmental and operative safety



Professional training for all user groups



Required multi-channel support available

WHY MID?

What is MID and what you need to know about it



Measuring Instruments Directive known as MID is one of the so called CE Directives, controlling safety requirements, manufacturing and approval of measuring instruments. MID regulates both legal metrology related measuring instruments and software. Usage of measurement instruments is regulated by national authorities. The first MID came into effect in 2004 and the renewed MID 2014/32/EU ten years later. Transition period came to an end in 2016. This means that since 30.10.2016 all new measuring systems have to be MID compliant. This applies equally to old systems that are upgraded.

BECAUSE

- MID approved system gives grounds for correct taxation
- MID approval is an assurance of correct fiscal data (custody transfer)

MID approved measurement data carries great significance for the society on the whole. Correct energy taxation is vital for any government. In cases of custody transfer, both the buyer and the seller expect to see MID certified, trustworthy measurement reports of the transaction.

MID regulates measurement systems of all liquids other than water. This includes measurement systems in oil and fuel terminals.

Increasing role of software in measurements

Digital measuring and storing of data is constantly developing. MID pays special attention to securing software and protecting it from corruption.

MID Scope

- MI-001 water meters
- MI-002 gas meters and volume conversion devices
- MI-003 active electrical energy meters thermal energy meters
- MI-004 measuring systems for continuous and
- MI-005 dynamic measurement of quantities of liquids other than water
- MI-006 automatic weighing instruments
- MI-007 taximeters
- MI-008 material measures
- MI-009 dimensional measuring instruments
- MI-010 exhaust gas analysers

According to MID, components that are critical for metrological characteristics have to be designed so that they can be secured. Even attempted intervention should be registered and evidence of it has to be available for a reasonable period of time. Measurement data, software that is critical for measurement characteristics and metrologically important parameters stored or transmitted must be adequately protected against accidental or intentional corruption. It should not be possible to reset utility measuring instruments displaying total quantity supplied, when this amount is used for invoicing.

Who benefits is responsible

According to MID, an entity commercially benefitting from a measurement result is responsible for having MID compliant measurement systems.

All these requirements have been taken into consideration in the development of OnatexMID measurement system.

OnatexMID liquid measurement system

- proven in use

Ontec took to develop MID products already in 2004. After ten years, Ontec was the first company in the world to develop a MID certified digital connection with flowmeters enabling usage of data of volume, mass and density in a MID approved manner.

After the OntexMID Directive 2014/32/EU approval in 2014, the system has proven itself in several industrial objects. Traditional double pulse meters can also be connected to the system with MID approval. Developing an MID approved measuring systems takes time and effort. Our pre-existing MID approval will diminish your risks and speed up your project schedule.

Useful links

Follow our MID and legal metrology article series in LinkedIn

MID AND ATEX CERTIFICATIONS

OnatexMID MID Measurement Instruments Directive 2014/32/EU compliant, MID certified system.

The system can be used for legal metrology purposes when measuring quantities of liquids other than water (MI-005) and it is approved for fiscal billing purposes (custody transfer).

The system fulfils the recommendations and requirements of OIML and Welmec. It also has ATEX certification for potentially explosive atmospheres.

Certifications are made by the leading inspection bodies of the world.





OnatexMID

Exact measuring

OnatexMID is MID approved system that took years to develop. The technology is protected from manipulation as required by MID and the audit trail guarantees traceability of events.



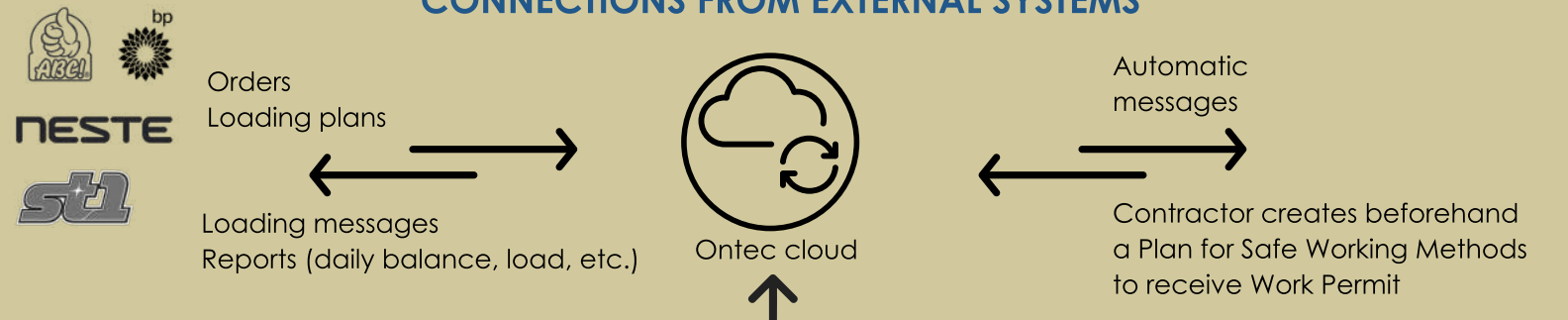
Event search by MID identifier.



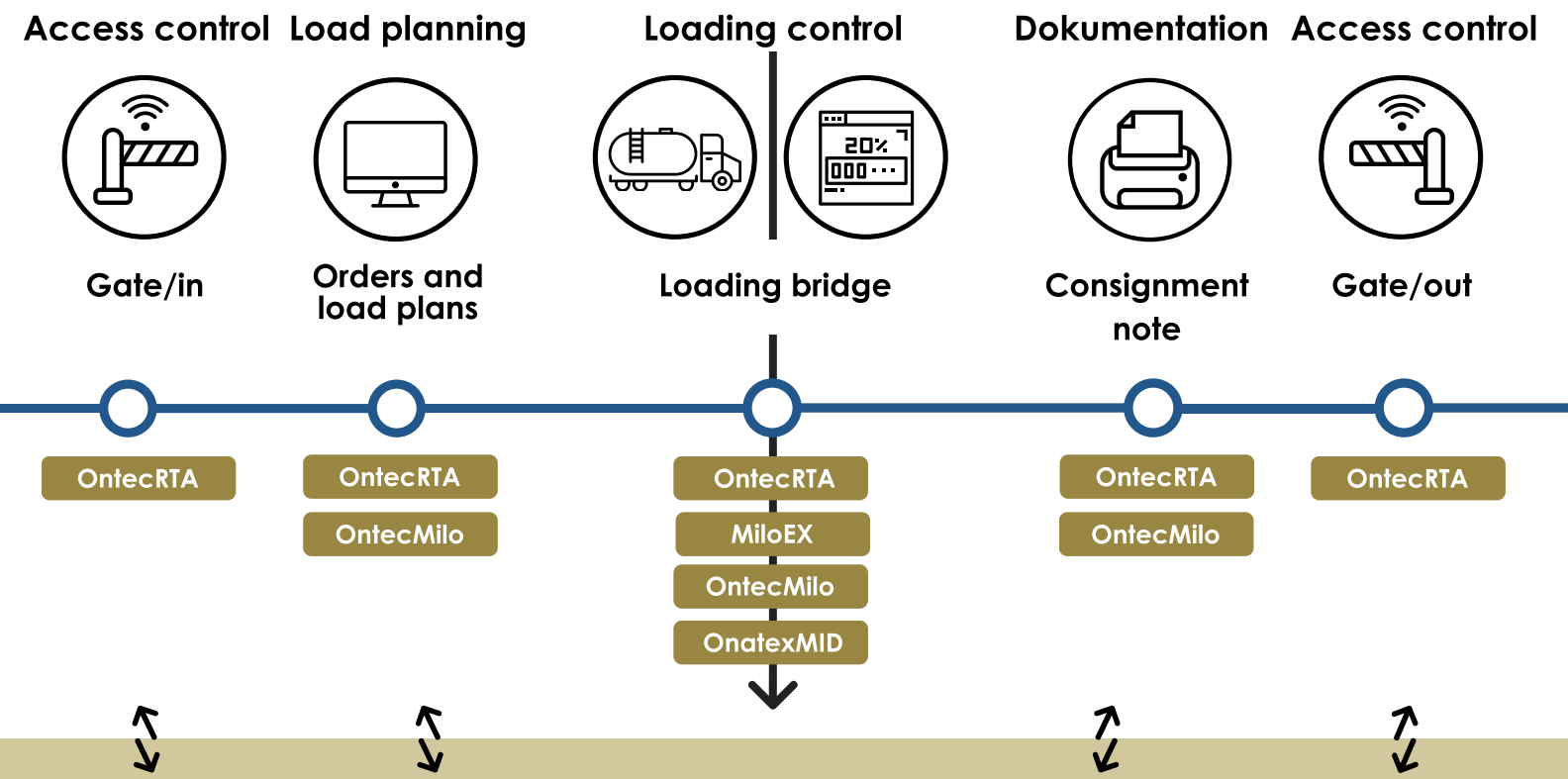
Last six events are automatically visible.

LOADING TERMINAL

CONNECTIONS FROM EXTERNAL SYSTEMS

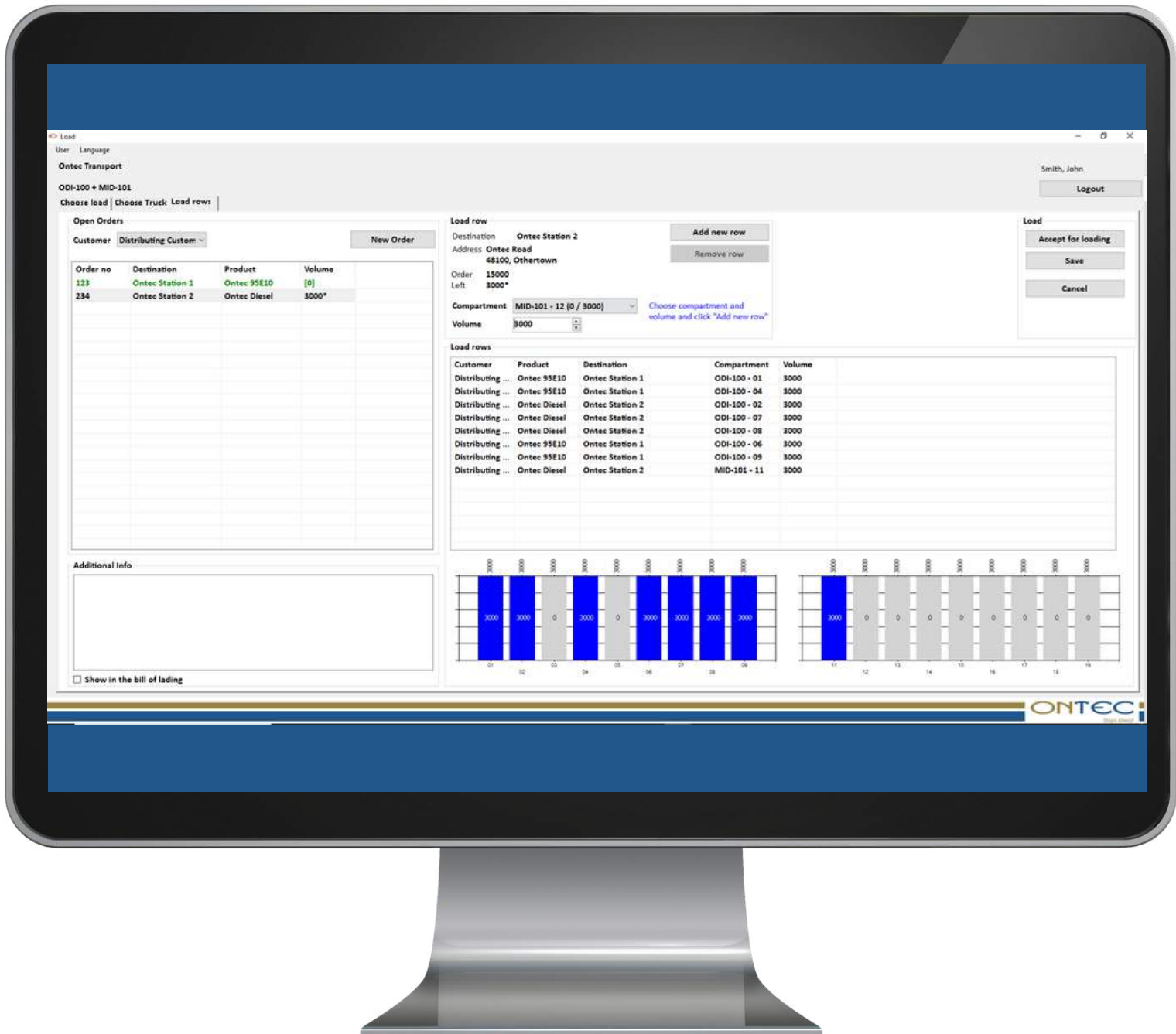


LOADING



ONTEC PRODUCTS IN OntecOGC TERMINAL SYSTEM

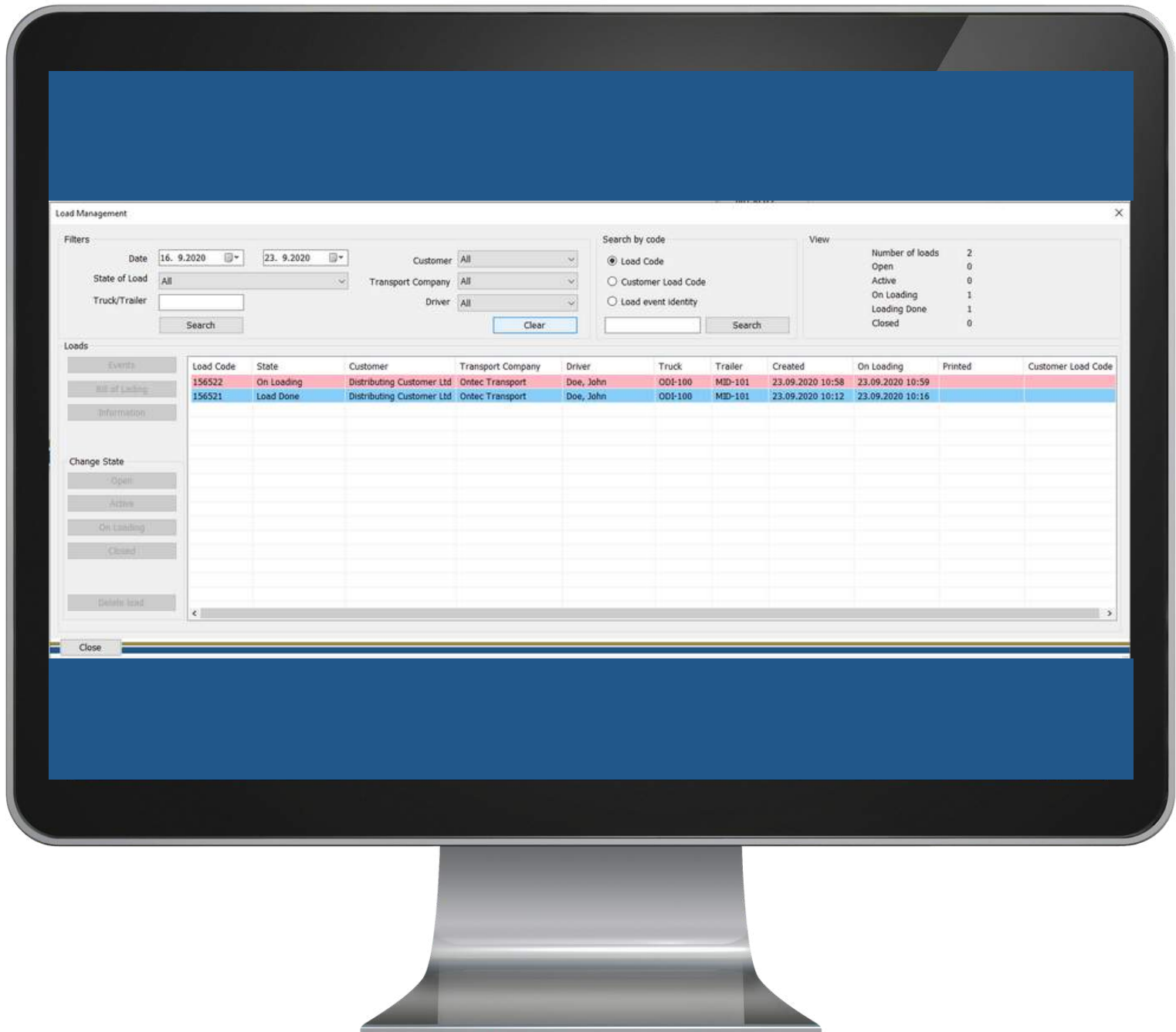
LOAD MANAGEMENT



Load plans

- Load planning in OntecMilo software
- Connections to customers' systems: load plans and completed loading reports

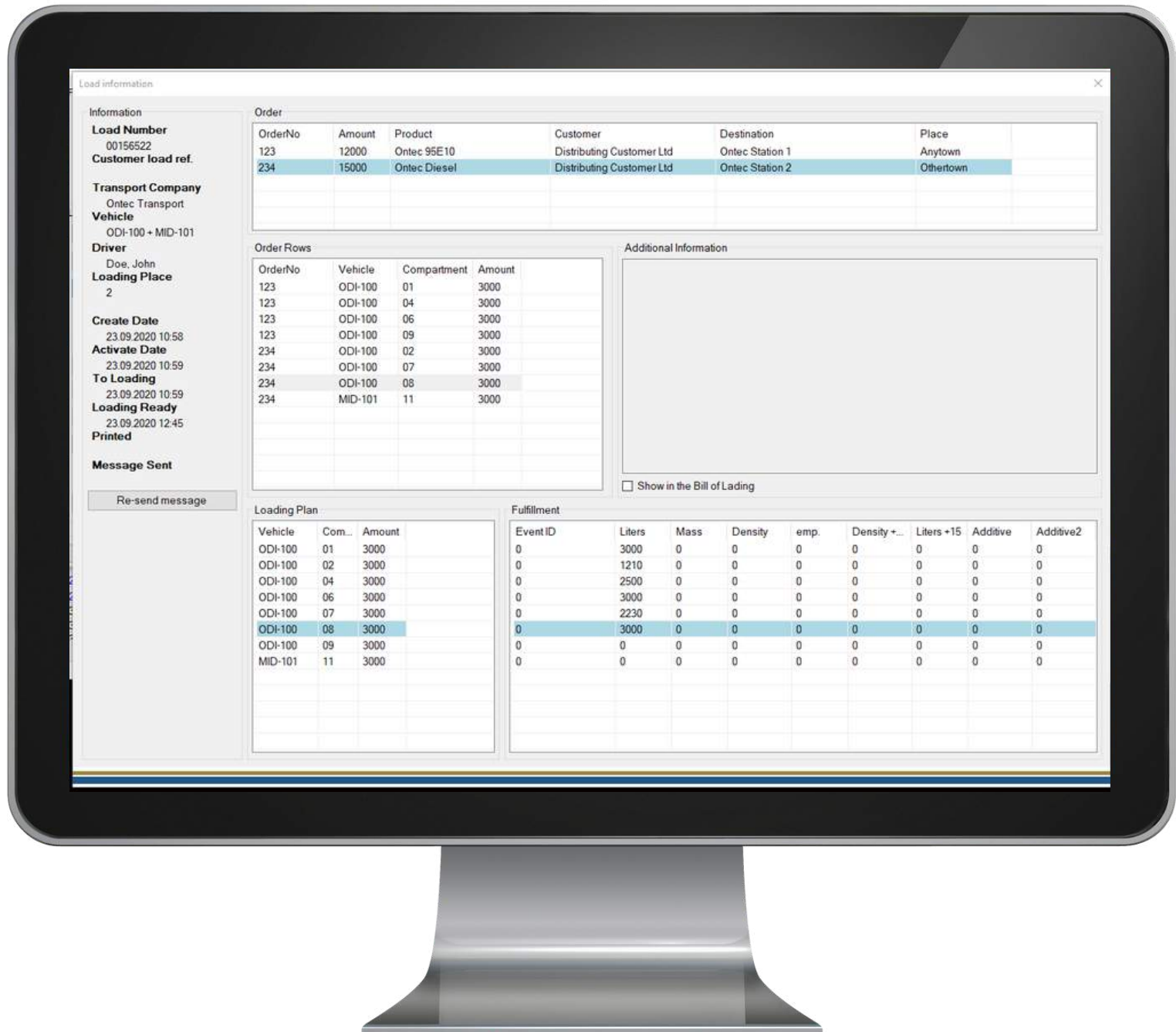
LOAD MANAGEMENT



Load information and events

- Load browsing and search
- Load IDs
- Load status

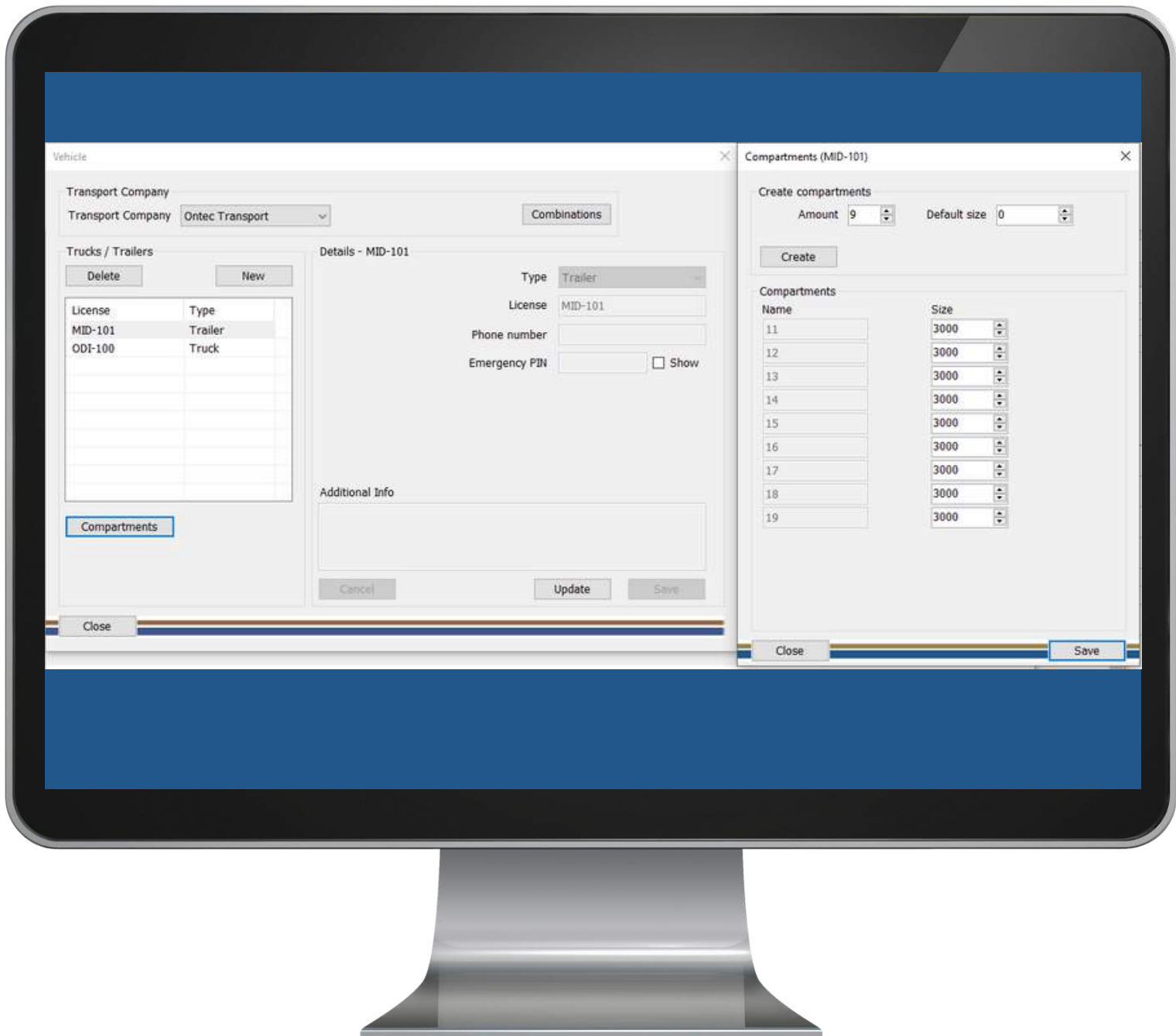
LOAD MANAGEMENT



Load information and events

- Load data: loading plan, completed loadings (MID identifiers)
- Tracking loading events: driver logins, start and end times of loading events, etc.

VEHICLE MANAGEMENT



Vehicles and vehicle maintenance

- Identifying data of vehicles
- Compartment settings

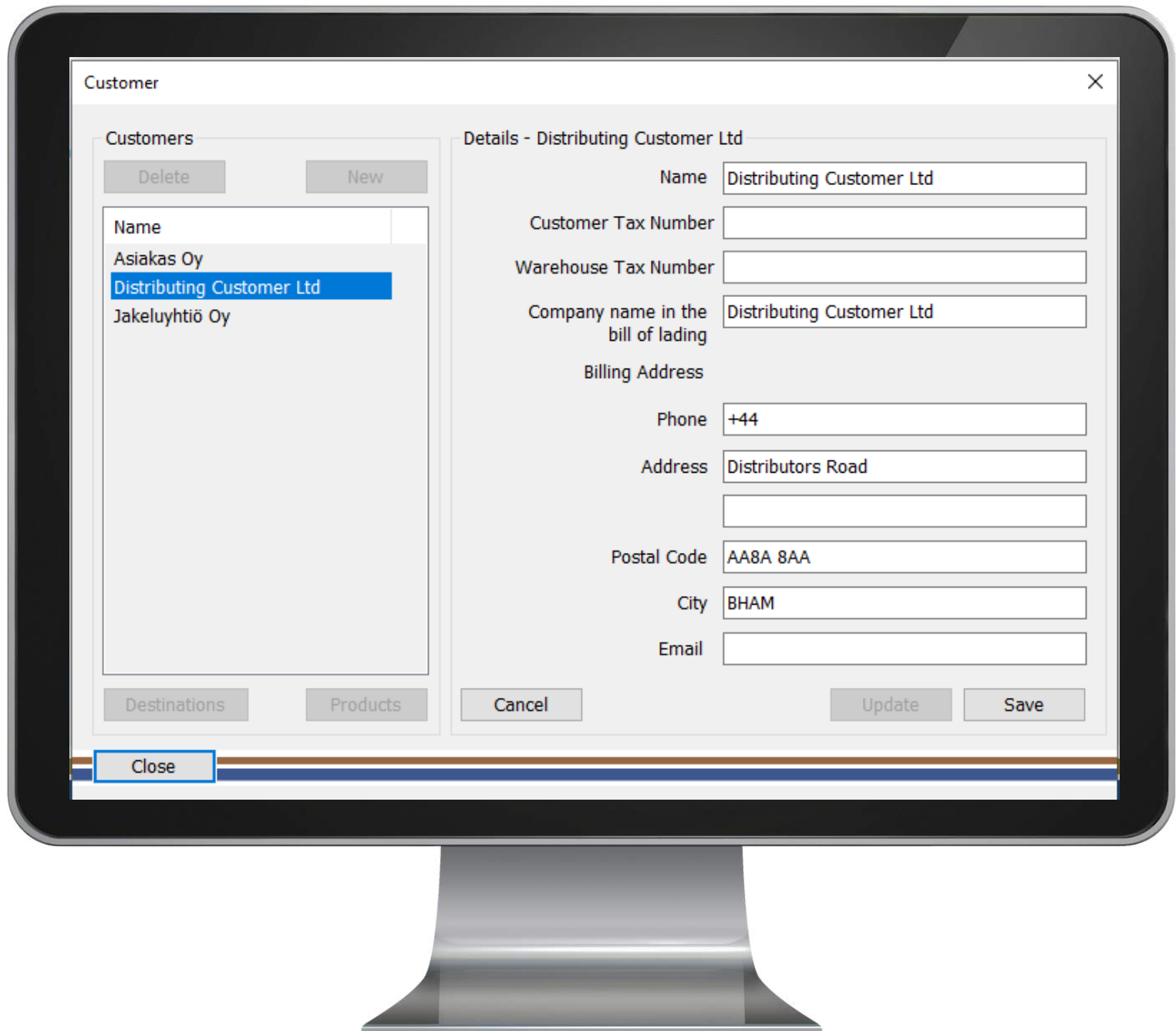
LOADING MANAGEMENT



Loading screen visible to the driver during loading

- Green color = loaded compartments
- Blue bar shows in real time progression of loading
- Flow rate visible

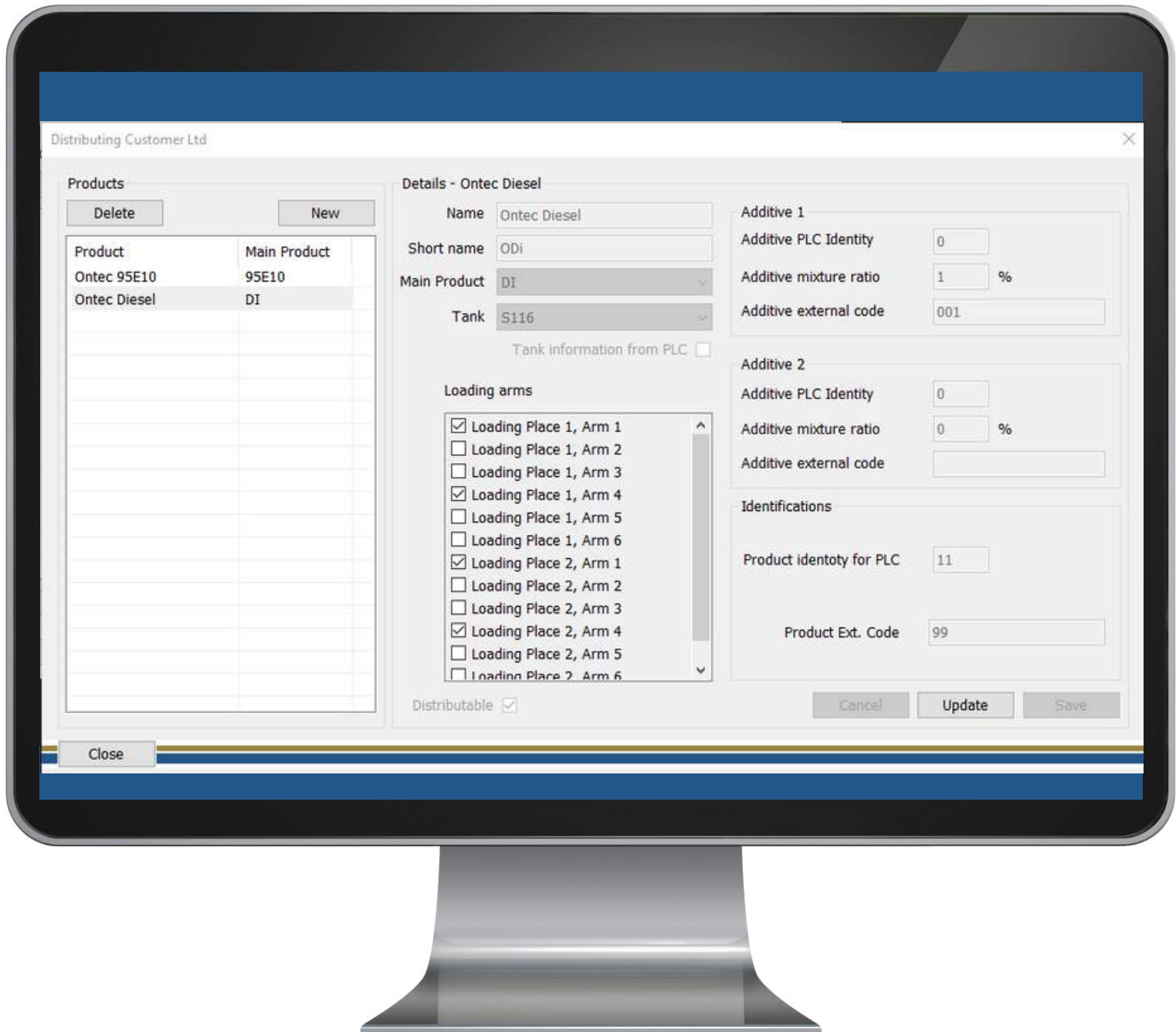
CUSTOMER MANAGEMENT



Customer management

- Contact and invoicing details
- Taxation details
- Customer product balance tracking

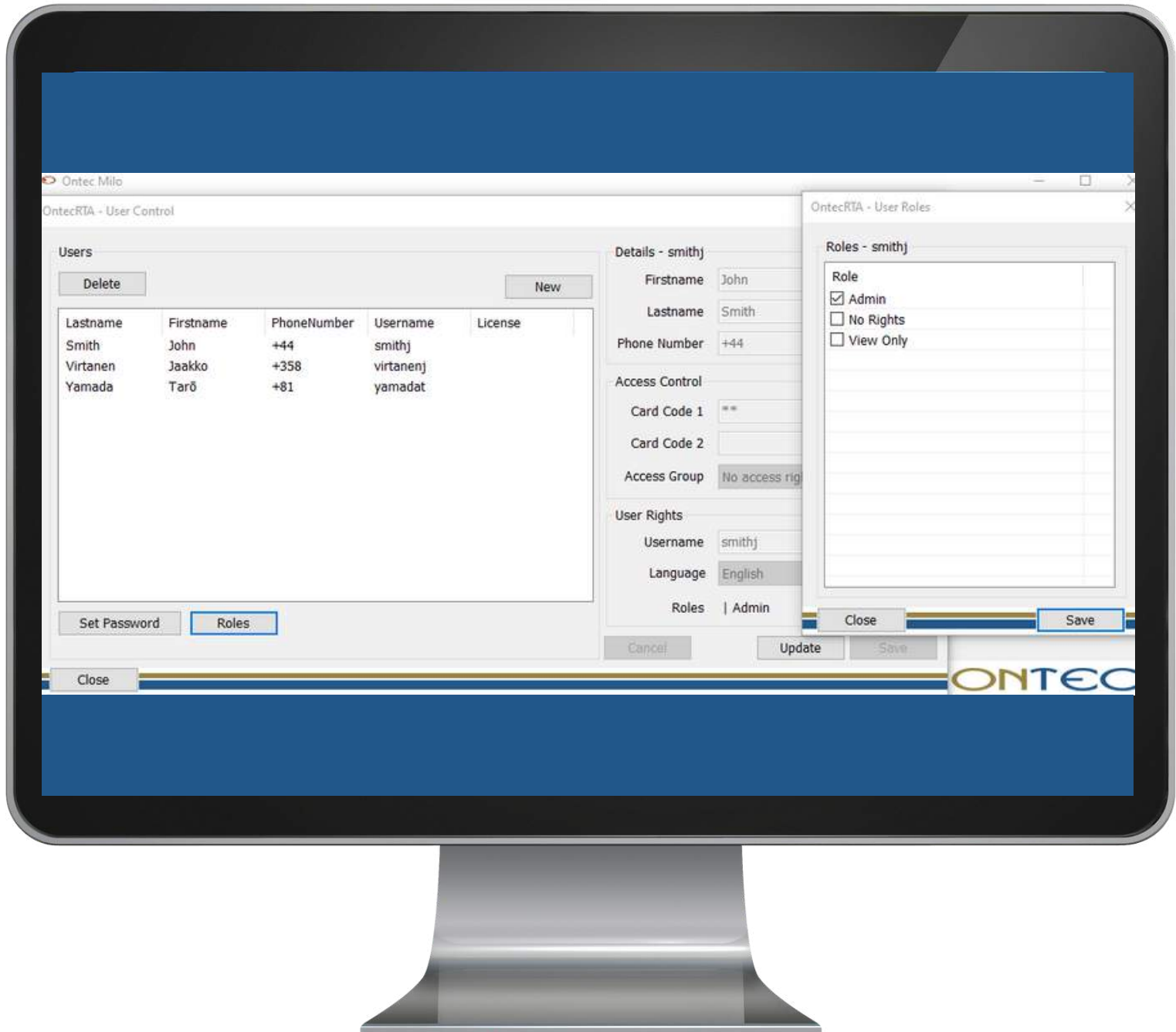
PRODUCT MANAGEMENT



Product management and recipes

- Database for products of each customer
- Name and location of each product
- Possible loading bays and arms
- Recipes of additives
- Product codes/IDs
- Customisable
- Product line and loading bay management Tuotelinjojen ja lastauspaikkojen hallinta

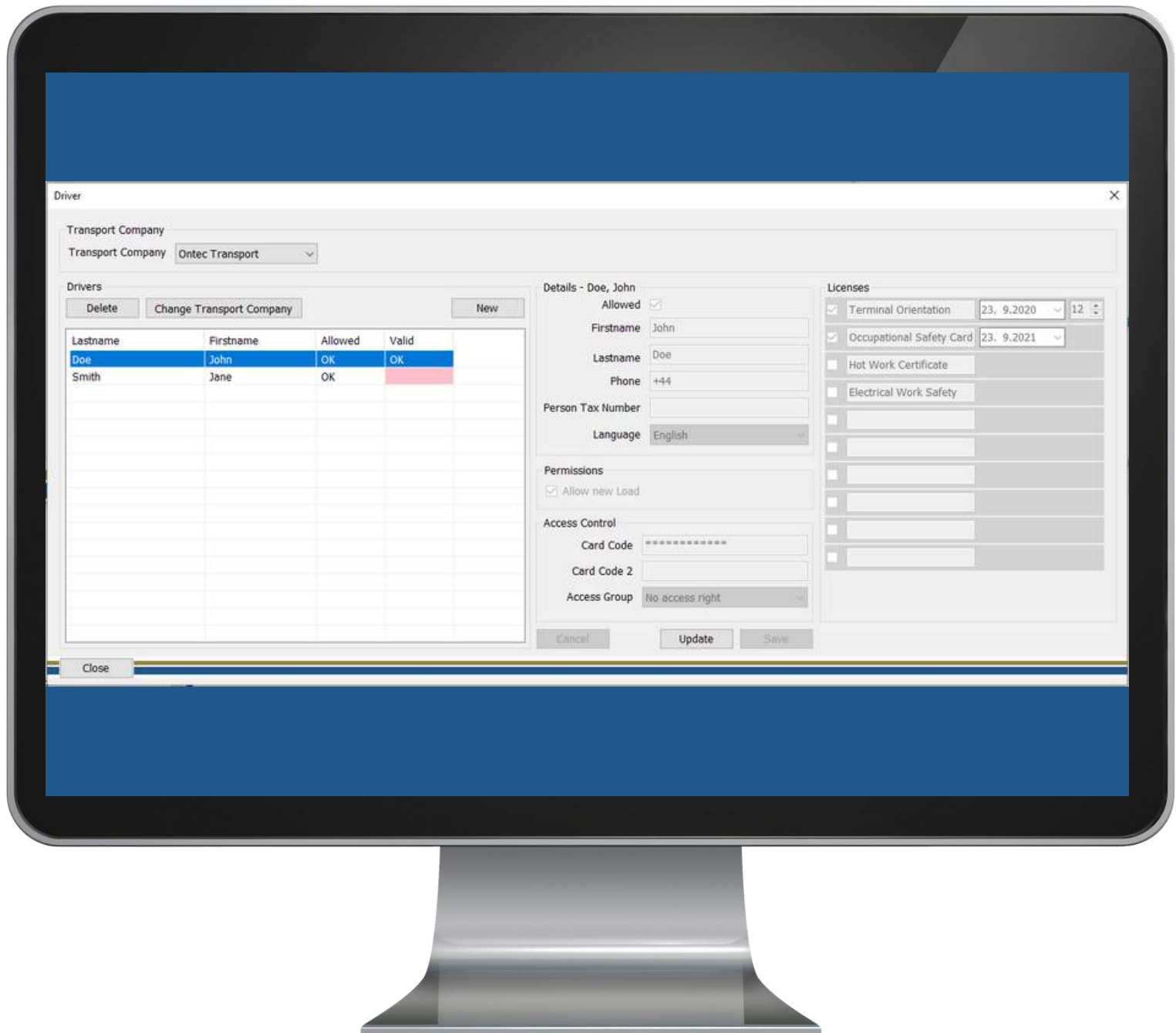
USER MANAGEMENT



User management

- Electric identification with, for example, OntecRTA card
- Multi-language
- Access levels for different user groups

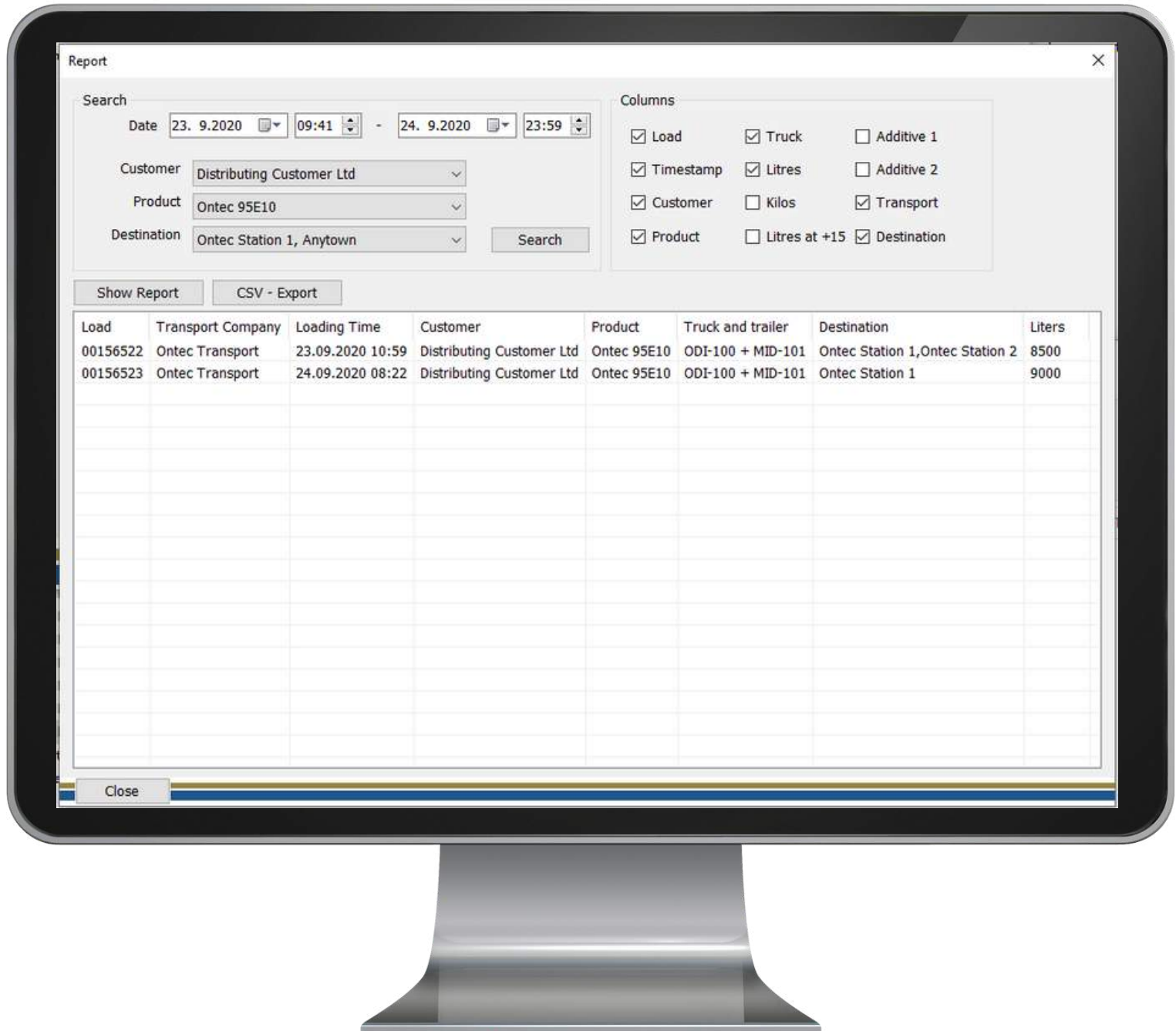
USER MANAGEMENT



Driver management

- Personal and contact details
- User-rights
- Authorisations, qualifications, validity periods. Until date or Valid for x months options possible.

REPORTS



Reports

- Formal reports
- Possible to select data for printing

DOCUMENTS

BILL OF LADING
24.09.2020 09:46



SENDER	LOADING PLACE
Distributing Customer Ltd Distributors Road AA8A 8AA BHAM	Arkalan Terminaali Terminaalitie 2 91310 Arkala +358 40 111 222

CUSTOMER	BILLING ADDRESS
DESTINATION Ontec Station 1 Ontec Station Road 277 48400 Anytown +358 44	Distributing Customer Ltd Distributors Road AA8A 8AA BHAM +44

TRANSPORT COMPANY	DRIVER
Ontec Transport	

Doe, John

CONSIGNMENT NOTE NUMBER: 00156522 ODI-100 + MID-101

Loading date: 23.09.2020 10:59

ORDER Number	Volume	LOAD					Calc		
		ODI-100 Compartment	Product	Litres	Weight (kg)	LoadEvent	Temper atur	Density	Litres +15
123	12000	01	Ontec 95E10 UN1203 GASOLINE, 3, II	3000	0	0	0	0	0 [0]
123	12000	04	Ontec 95E10 UN1203 GASOLINE, 3, II	2500	0	0	0	0	0 [0]
123	12000	06	Ontec 95E10 UN1203 GASOLINE, 3, II	3000	0	0	0	0	0 [0]
123	12000	09	Ontec 95E10 UN1203 GASOLINE, 3, II	0	0	0	0	0	0 [0]
			Total	8500	0				0

CONSIGNEE SIGNATURE



After driver's electronic identification, necessary MID compliant documentation is printed automatically without additional logins or time consuming document search

- Loading plans
- Bills of Lading for each place of destination
- Ullage report

FEEDBACK FROM DRIVERS

Our loading system has been developed with end-users for more than a decade. That is why the system is so good and versatile.

As long as OntecMilo has been in use, we have been listening closely to the opinions of its end-users, the tank truck drivers. This is the only way to ensure that the turn-around time of trucks stays as short as possible and the bays can stay in maximum efficient use.

This has also allowed us to develop the system to serve multiple customers a terminal may have.

READY SYSTEM, YET EASILY CUSTOMISABLE



Despite the fact that OntecMilo-loading system is ready, operational system, each terminal and its customers have their own unique needs. We know this and that is why we made sure that OntecMilo can be easily customised as required. Changes easy also after commissioning.



QUALITY MANAGEMENT SYSTEMS AND CERTIFICATIONS

High quality is possible only when each employee is committed to it. We develop the expertise of our employees constantly by training them in-house and by outside experts. Everyone at Ontec is keen on developing our working methods. Strengths of Ontec Oy are: understanding the big picture of the industry, knowing our clients and their production processes, clients receive full solutions to their problems, agility and short response times.

ISO 9001

Quality Management System since 2012

ATEX

QMS for Potentially explosive atmospheres (directive 2014/34/EU)

KATAKRI

Ontec Oy's premises, operating methods, and electronic data processing equipment are Katakri 2020 qualified

KNOWN SUPPLIER

Known Supplier of Airport Supplies



T10

Our health and safety processes are T10 audited

CONTACT US

ONTEC OY

Sutelantie 277

48400 KOTKA

+358 5 229 6300

info@ontec.fi

SALES & MARKETING

Kare Kupiainen

+358 440 668 321

kare.kupiainen@ontec.fi

PROJECTS

Esa Käyhty

+358 440 668 322

esa.kayhty@ontec.fi

MARKETING & QUALITY

Tanja Karpale

+358 451 177 701

tanja.karpale@ontec.fi

ONTEC.FI 

